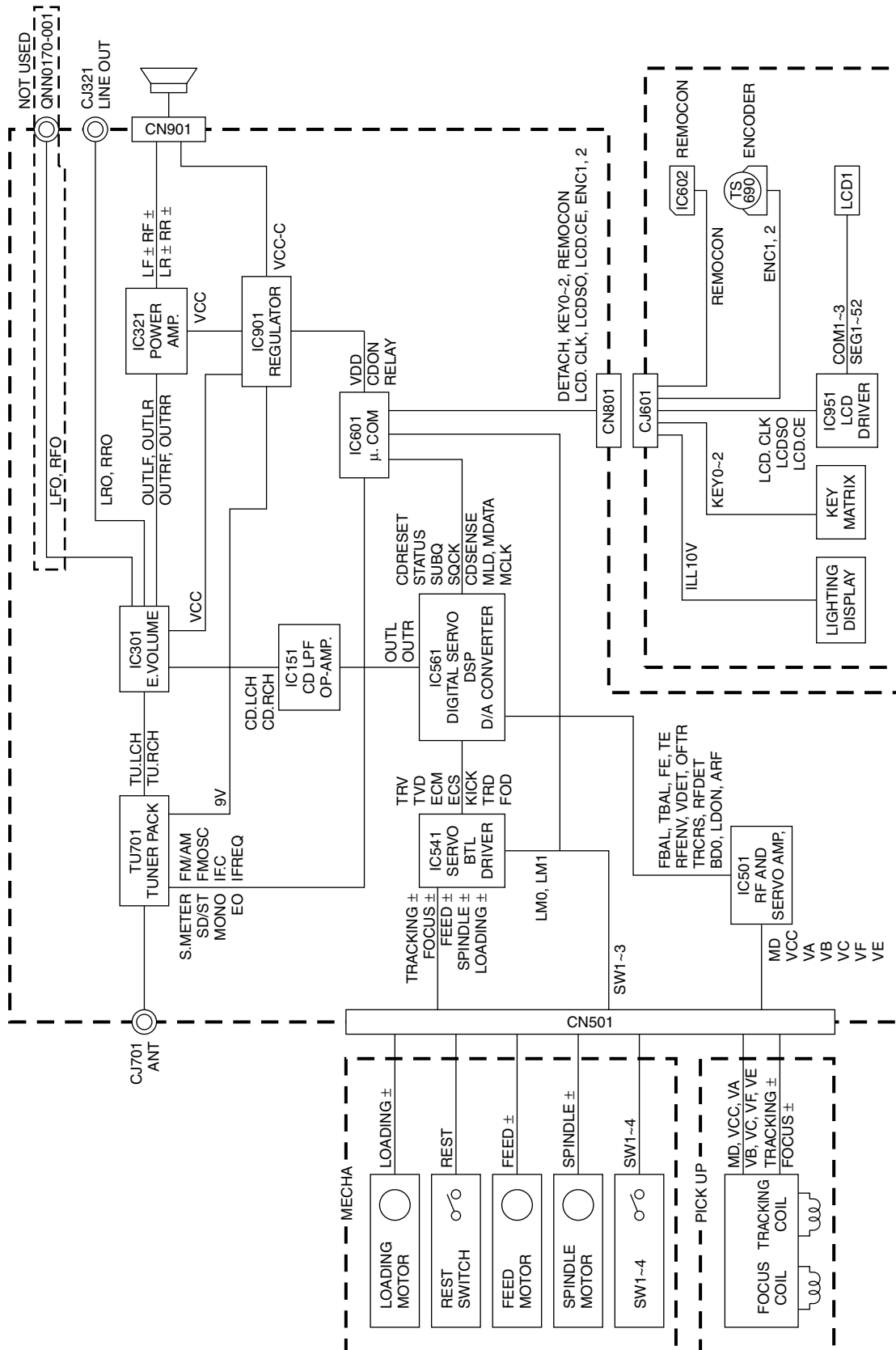
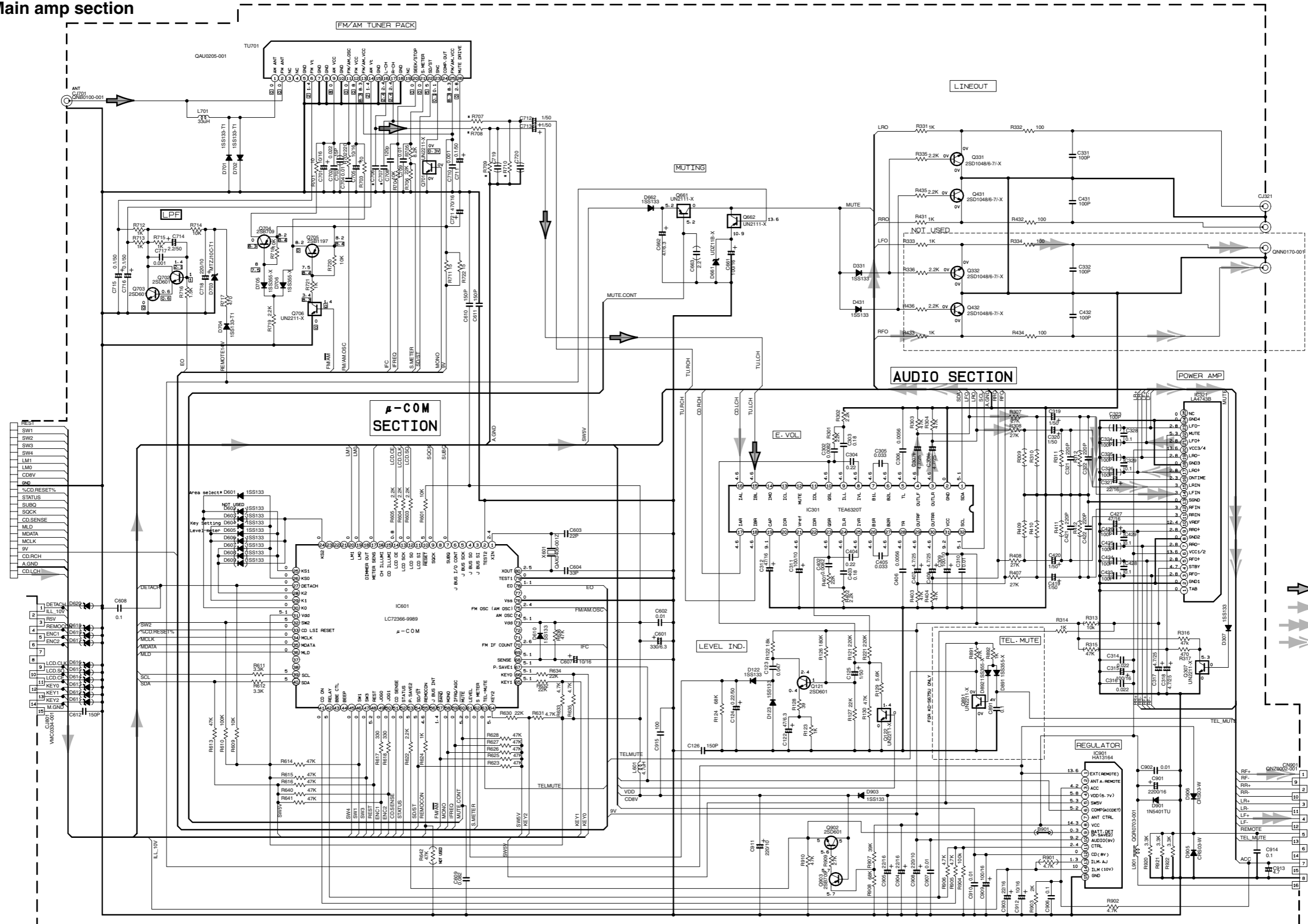


# Block diagram



# Standard schematic diagrams

## Main amp section



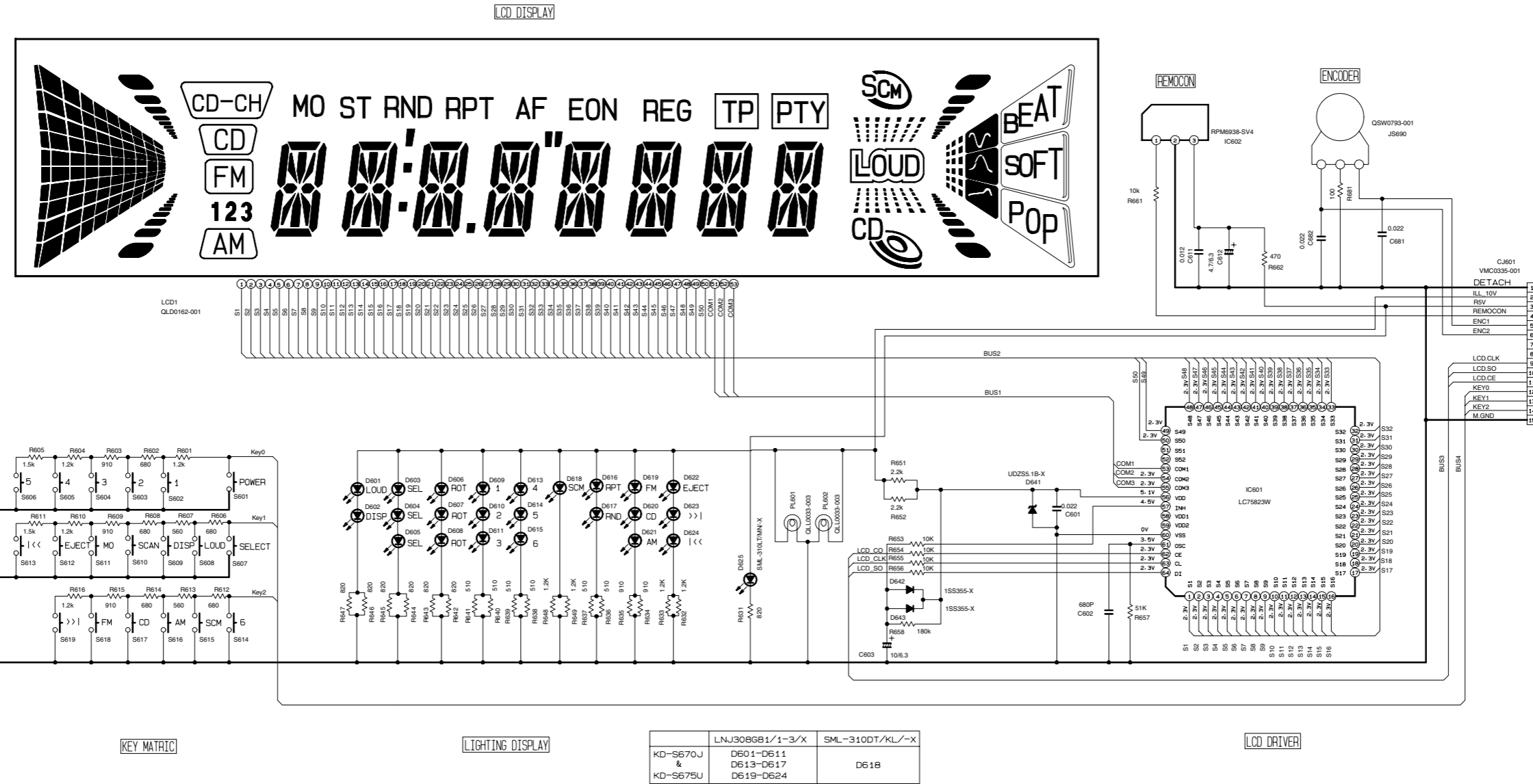
REMARKS	C706, C707	R707, R708	R709, R710	D601
J VERSION	0.033	2.7K	5.1K	NOT USED
V SERIES	0.022	2K	5.6K	USED

NOTES:  
 1. VOLTAGES ARE DC-MEASURED WITH A DIGITAL VOLT METER WITHOUT INPUT SIGNAL.  
 CONDITION --- FM ( ) AM MODE

A B C D E F G H I J

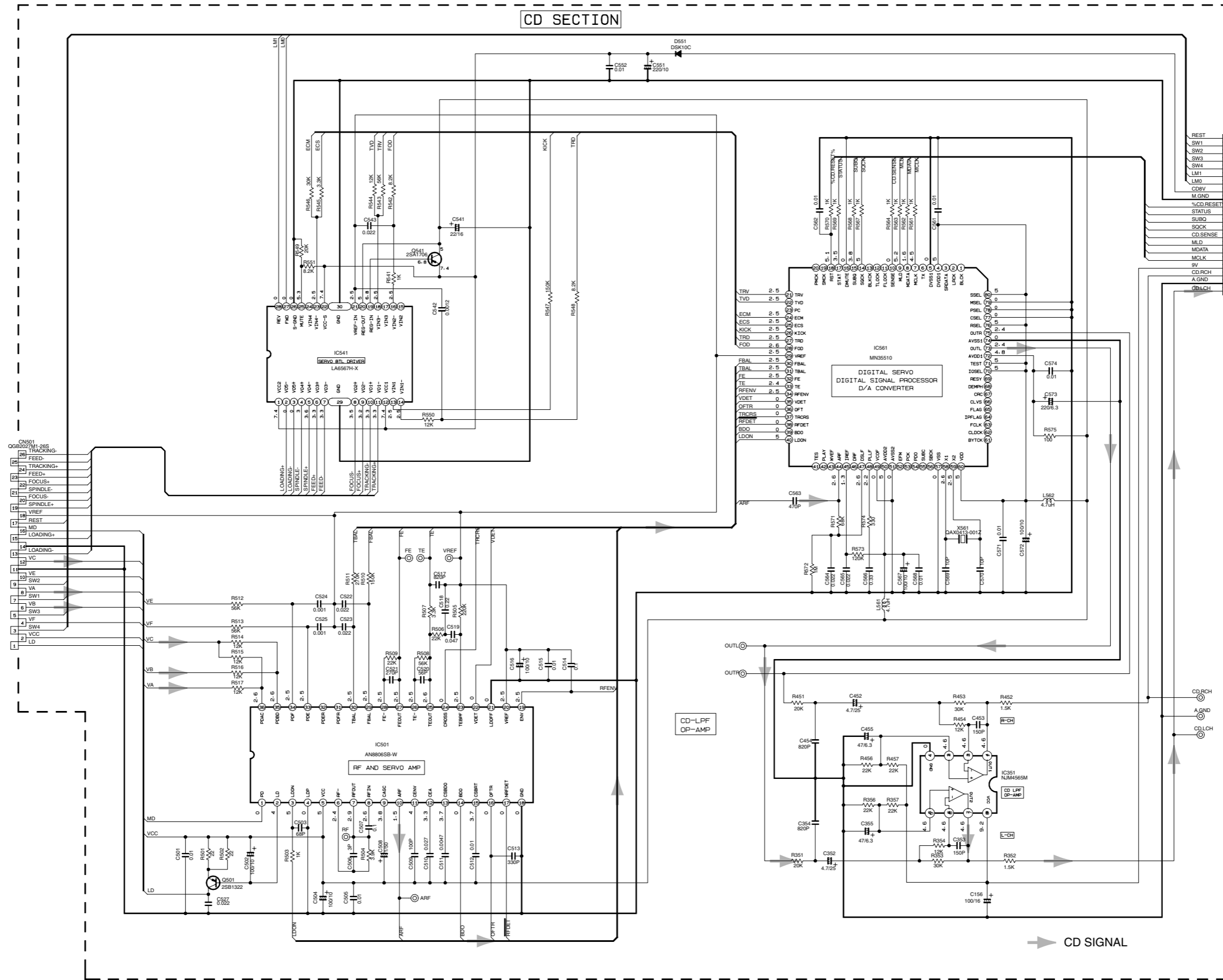
■ LCD & Key control section

7  
6  
5  
4  
3  
2  
1



A B C D E F G H I J

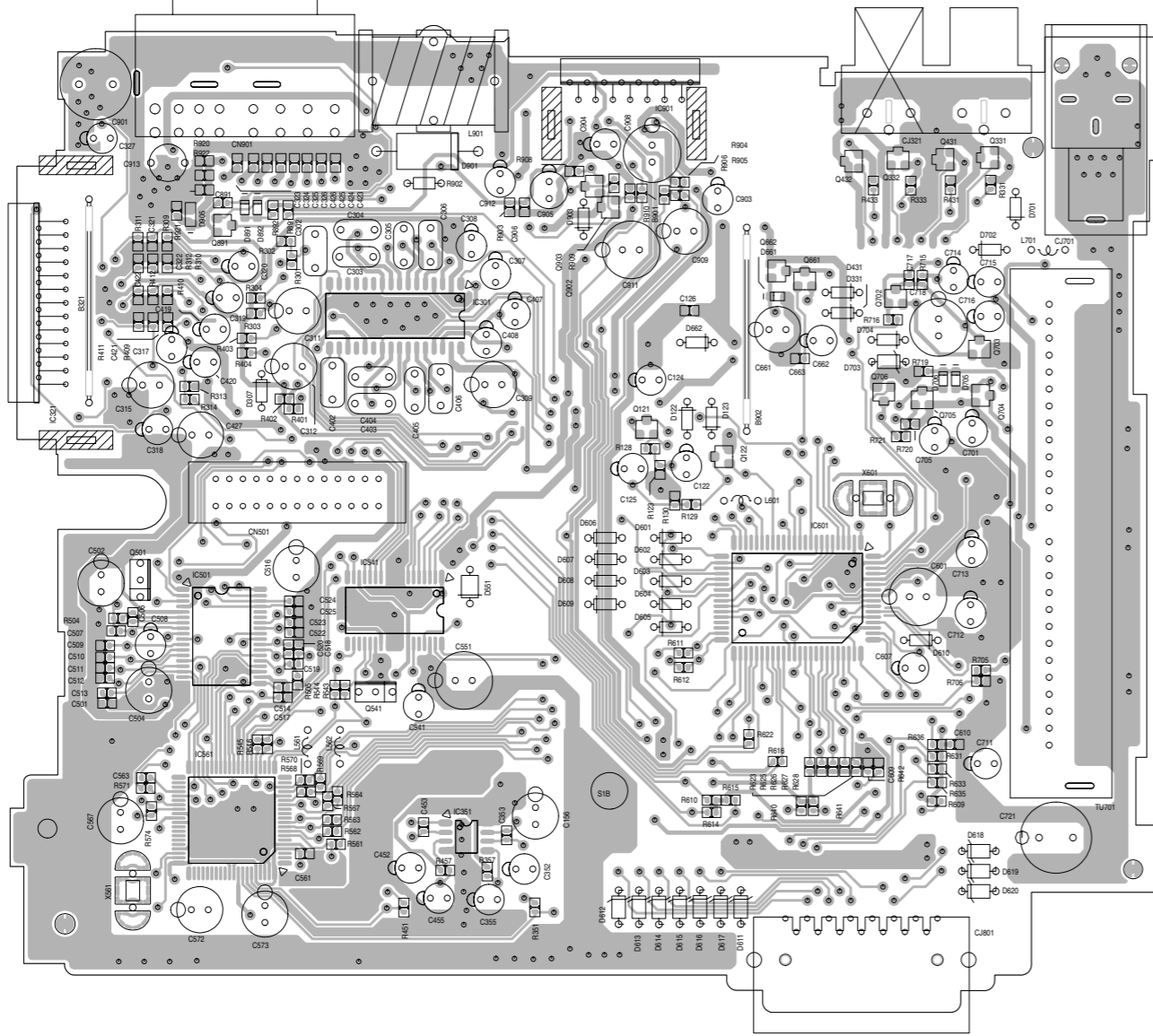
■ CD servo control section



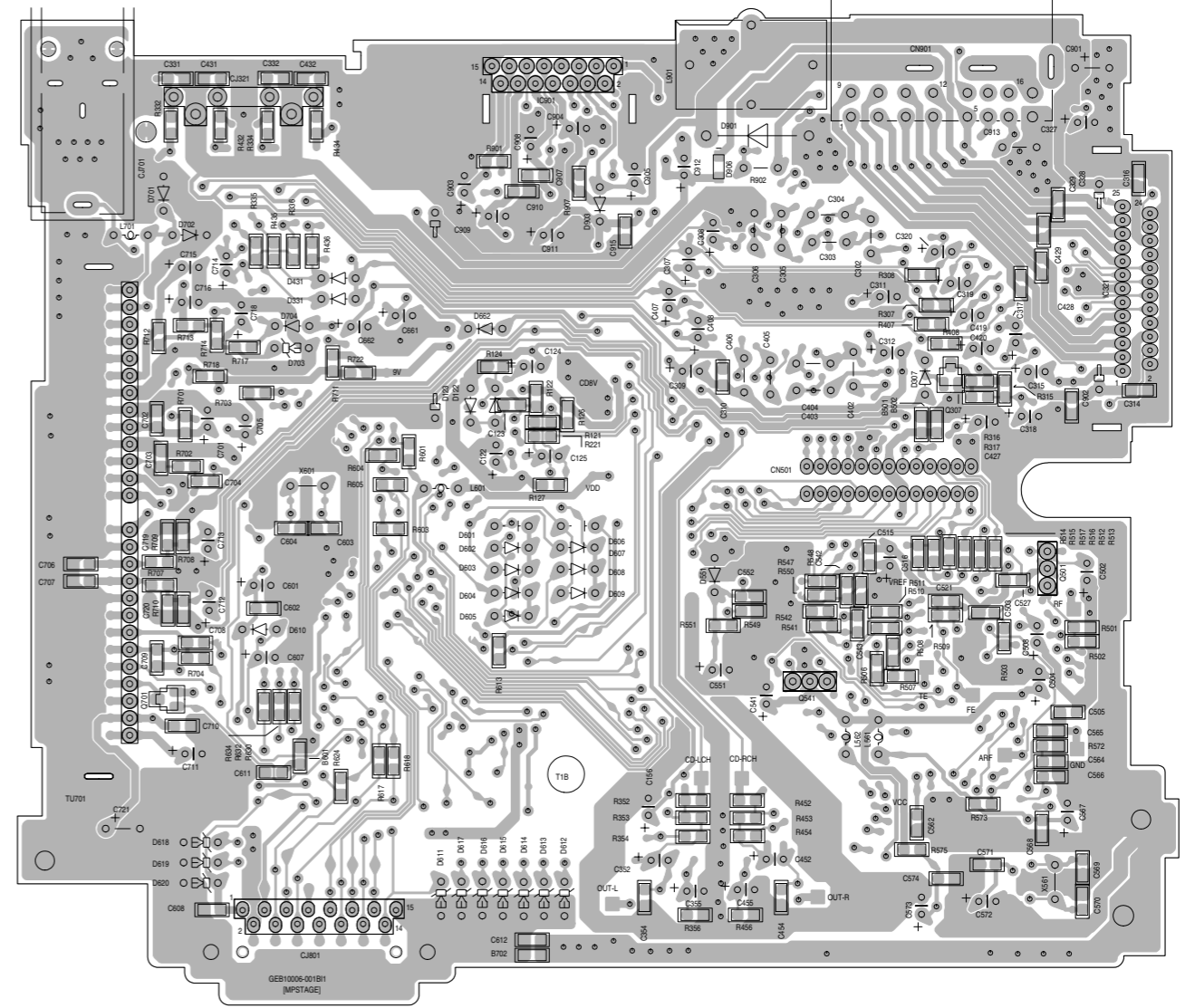
→ CD SIGNAL

# Printed circuit boards

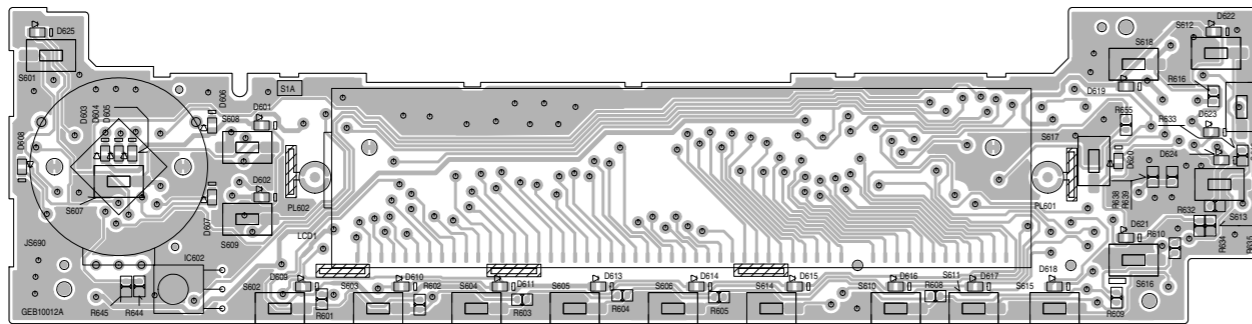
■ Main board (Forward side)



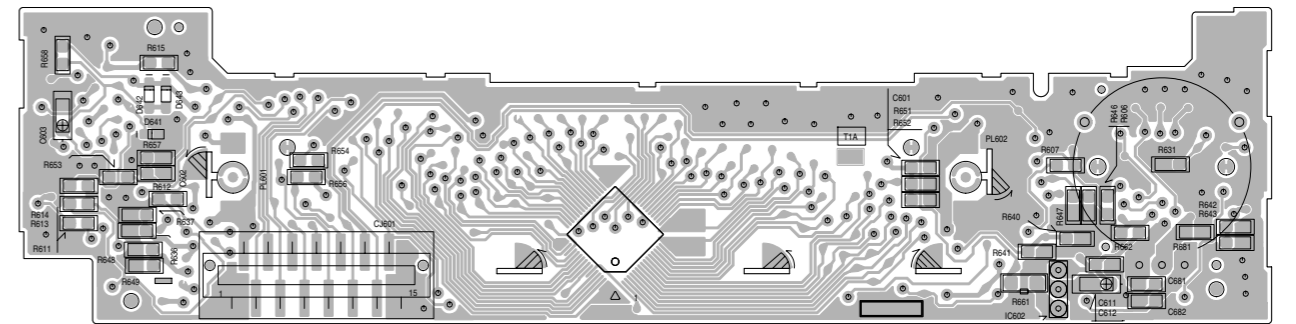
■ Main board (Reverse side)



■ Front board (Forward side)



■ Front board (Reverse side)



A

B

C

D

E

F

G

H

I

J

< MEMO >